



Hobnob Sled Base Armchair



Sebel™

Minimalist style, maximum comfort

A classically styled chair, the Hobnob is high performance, low maintenance. Engineered to withstand the rigours of constant use, it's perfect for high-traffic areas such as schools, universities, TAFE and community spaces.

The 'Hobnob' chair is one of our enduring iconic chairs designed by Charles Furey in 1973 for Sebel. The contour moulded seat shells are ergonomically designed and have been upholstered with highly resilient foam padding for additional comfort.

Features

- Contour moulded seat shells provide a high level of comfort offering correct seating posture.
- All welded steel frames finished in matte black powdercoat.
- Seat shell moulded from high impact resistant anti-static and UV protective polypropylene.
- Sled base frame enables easy manoeuvrability across carpet or vinyl.
- High resilient foam padding and durable fabric upholstery as an option.

Dimensions

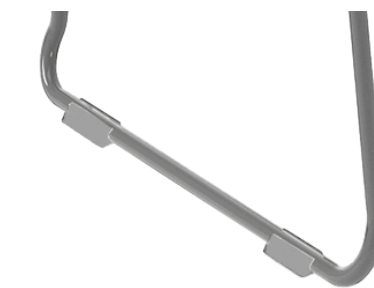
Style	Width	Depth	Seat Height	Overall Height
Hobnob Sled Base Armchair	620mm	590mm	450mm	790mm

Options

- Available with two floor glide options: Black Rubber for hard surfaces such as concrete, laminate and tiles, or Clear Polycarbonate for soft surfaces such as carpet.



Black Rubber Glides

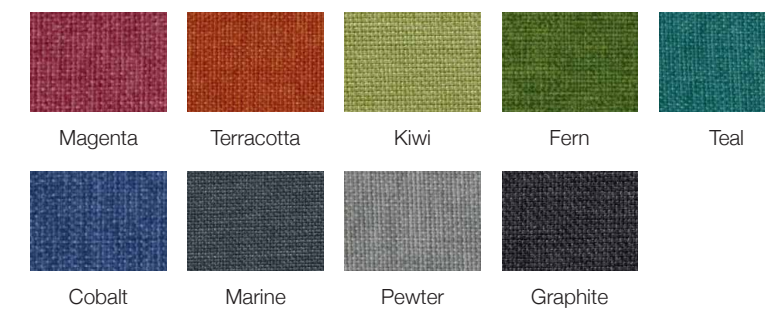


Clear Polycarbonate Glides

Colour Options

Upholstery

Warwick
Beachcomber



Polypropylene Shell

Black

Frame

Black

The colours shown have been reproduced to represent actual product colours as accurately as possible, however actual colours may vary. We recommend contacting your Sebel representative for a sample swatch for comparison prior to ordering.

For more information or samples, contact your Sebel representative, or email sales@sebel furniture.com

Sebel-BRO-130R2, E&OE

- Black polypropylene shell.
- Upholstered seat.



Black Polypropylene



Upholstered Seat