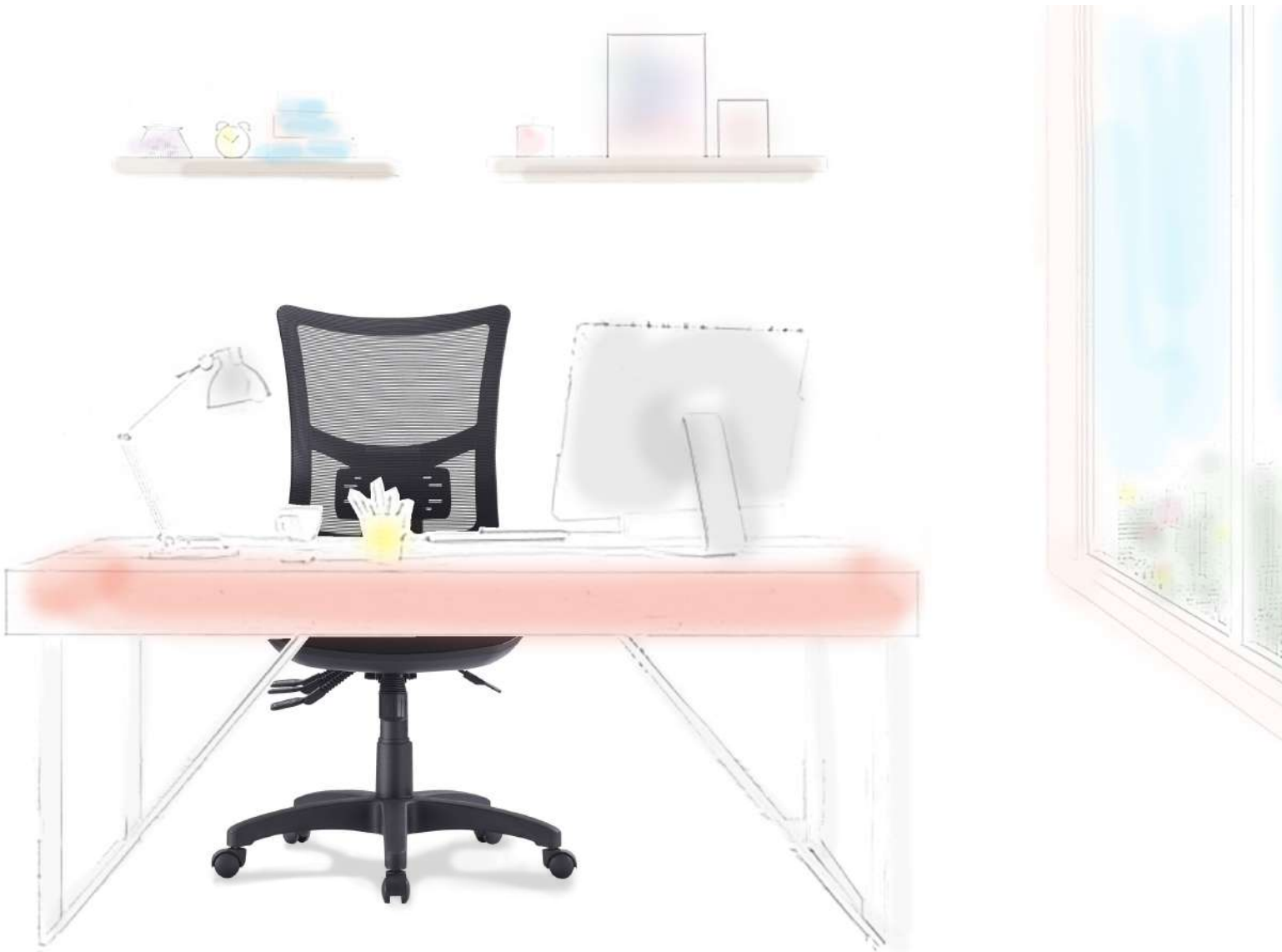




**OUR INNOVATION,  
YOUR REALITY**



**2022- 2023 CATALOGUE**

# RIO RANGE

## TASK SEATING



RIO-HC-MB



Box	Rio-L	Rio-H
Size (mm)	690x390x560	710x390x560
Weight(kg)	14.6	15.3

### FEATURES

- Adjustable seat height
- Adjustable back height (ratchet)
- Adjustable seat and back angle
- Optional adjustable arms
- Available in high and low back
- Moulded seat foam
- Mesh back
- 3 lever ergonomic mechanism
- 600mm black nylon base
- Available in Metro black only
- AFRDI tested to level 6
- Minor assembly required
- Suitable for indoor use only
- 7 year warranty
- Weight limit is 130kg



RIO-H-MB



RIO-LC-MB



RIO-L-MB



LOCALLY UPHOLSTERED  
AVOCA RANGE OPTION  
AVAILABLE

# BRENT RANGE

## TASK SEATING



BRENT-C-MB



Box	Brent
Size (mm)	750x420x650
Weight(kg)	20

### FEATURES

- Adjustable seat height
- Adjustable back height (ratchet)
- Adjustable back and seat angle
- Adjustable weight tension
- Adjustable seat depth (seat slider)
- Adjustable lumbar support
- Optional adjustable arms
- Moulded seat foam
- Big boy seat
- Mesh back
- 3 lever ergonomic heavy duty mechanism
- 700mm black nylon base
- Available in Metro black only
- AFRDI tested to level 6
- Suitable for indoor use only
- 7 year warranty
- Weight limit is 140kg



BRENT-MB



BRENT-MB  
BACK VIEW

# P350 RANGE

TASK SEATING



P350HC-MB



Box	P350	P350H
Size (mm)	650x360x560	750x360x560
Weight(kg)	13	13.6

## FEATURES

- Adjustable seat height
- Adjustable back height
- Adjustable seat and back angle
- Optional adjustable arms
- Available in high and low back
- Moulded seat and back foam
- 3 lever ergonomic mechanism
- 600mm black nylon base
- Available in Metro black only
- AFRDI tested to level 6
- Minor assembly required
- Suitable for indoor use only
- 7 year warranty
- Weight limit is 130kg



P350H-MB



P350C-MB



P350-MB



LOCALLY UPHOLSTERED  
PRESTIGE RANGE OPTION  
AVAILABLE



# CLICK RANGE

## TASK SEATING



CLICK-HC-MB

Box	Click-L	Click-H
Size (mm)	690x400x610	720x400x610
Weight(kg)	14	18

### FEATURES

- Adjustable seat height
- Adjustable back height (ratchet)
- Adjustable seat and back angle
- Optional adjustable arms
- Available in high and low back
- Moulded seat and back foam
- Square seat
- 3 lever ergonomic mechanism
- 660mm black nylon base
- Available in Metro black only
- AFRDI tested to level 6
- Minor assembly required
- Suitable for indoor use only
- 7 year warranty
- Weight limit is 130kg



CLICK-H-MB



CLICK-LC-MB



CLICK-L-MB



LOCALLY UPHOLSTERED  
VIRGO RANGE OPTION  
AVAILABLE

# EXPO RANGE

## TASK SEATING



EXPO-HC-MB



Box	Expo-L	Expo-H
Size (mm)	690x400x610	720x400x610
Weight(kg)	14	18

### FEATURES

- Adjustable seat height
- Adjustable back height (ratchet)
- Adjustable seat and back angle
- Optional adjustable arms
- Available in high and low back
- Moulded seat foam
- Mesh back
- 3 lever ergonomic mechanism
- 660mm black nylon base
- Available in Metro black only
- AFRDI tested to level 6
- Minor assembly required
- Suitable for indoor use only
- 7 year warranty
- Weight limit is 130kg



EXPO-H-MB



EXPO-LC-MB



EXPO-L-MB



LOCALLY UPHOLSTERED  
VESTA RANGE OPTION  
AVAILABLE

# TR600 RANGE

TASK SEATING



TR600C-MB



Box	TR600
Size (mm)	790x420x640
Weight(kg)	18.9

## FEATURES

- Adjustable seat height
- Adjustable back height (ratchet)
- Adjustable seat and back angle
- Adjustable weight tension
- Optional adjustable arms
- Moulded seat and back foam
- Mega big boy seat
- 3 lever heavy duty ergonomic mechanism
- 700mm black nylon base
- Chair not available with drafting kit
- Available in Metro black only
- AFRDI tested to level 6
- Minor assembly required
- Suitable for indoor use only
- 7 year warranty
- Weight limit is 140kg



TR600-MB



TR600-MB  
BACK VIEW



LOCALLY UPHOLSTERED  
EPIC RANGE OPTION  
AVAILABLE

# HINO RANGE

## TASK SEATING



HINO-C-MB

Box	Hino
Size (mm)	790x420x640
Weight(kg)	18.5

### FEATURES

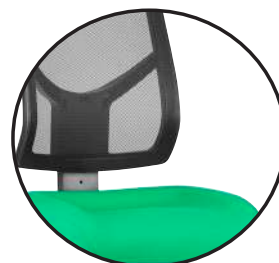
- Adjustable seat height
- Adjustable back height (ratchet)
- Adjustable seat and back angle
- Adjustable weight tension
- Optional adjustable arms
- Moulded seat foam
- Mega big boy seat
- Mesh back
- 3 lever heavy duty ergonomic mechanism
- 700mm black nylon base
- Chair not available with drafting kit
- Available in Metro black only
- AFRDI tested to level 6
- Minor assembly required
- Suitable for indoor use only
- 7 year warranty
- Weight limit is 140kg



HINO-MB



HINO-MB  
BACK VIEW



LOCALLY UPHOLSTERED  
MEGA RANGE OPTION  
AVAILABLE



# SPOT RANGE

## TASK SEATING



SPOT-C-MB



Box	Spot
Size (mm)	790x420x640
Weight(kg)	18

### FEATURES

- Adjustable seat height
- Adjustable back height (ratchet)
- Adjustable seat and back angle
- Adjustable weight tension
- Optional adjustable arms
- Moulded seat and back foam
- Mega big boy seat
- 3 lever heavy duty ergonomic mechanism
- 700mm black nylon base
- Chair not available with drafting kit
- Available in Metro black only
- AFRDI tested to level 6
- Minor assembly required
- Suitable for indoor use only
- 7 year warranty
- Weight limit is 140kg



SPOT-MB



SPOT-MB  
BACK VIEW



LOCALLY UPHOLSTERED  
SPIRAL RANGE OPTION  
AVAILABLE



# AVOCA RANGE

TASK SEATING

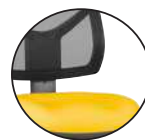


MAV200D-200



## FEATURES

- Adjustable seat height
- Adjustable back height (ratchet)
- Adjustable back angle
- Optional adjustable arms
- Optional drafting kit
- Available in high and low back
- Moulded seat foam
- Mesh back
- 600mm black nylon base
- Available in local fabrics
- Back mesh available in Jazz mesh
- AFRDI tested to level 6
- Suitable for indoor use only
- 7 year warranty
- Weight limit is 130kg



UPHOLSTERED WITH  
ALL LOCAL FABRICS  
AVAILABLE

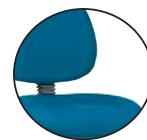


P200D-200



## FEATURES

- Adjustable seat height
- Adjustable back height
- Adjustable back angle
- Optional adjustable arms
- Optional drafting kit
- Available in high and low back
- Moulded seat foam
- 600mm black nylon base
- Available in local fabrics
- AFRDI tested to level 6
- Suitable for indoor use only
- 7 year warranty
- Weight limit is 130kg



UPHOLSTERED WITH  
ALL LOCAL FABRICS  
AVAILABLE

# WEB RANGE

## BOARDROOM SEATING



Box	Web-L
Size (mm)	770x360x630
Weight(kg)	16

### FEATURES

- Adjustable seat height
- Adjustable seat and back angle
- Adjustable weight tension
- Fixed chrome arms
- Knee tilt mechanism with 3 locking positions
- 700mm aluminium base
- Available in black only
- Minor assembly required
- Suitable for indoor use only
- 5 year warranty
- Weight limit is 120kg



WEB-LB



SIDE VIEW



BACK VIEW

# VOLT RANGE

## BOARDROOM SEATING



Box	Volt-ME	Volt-BL, TA, TE
Size (mm)	770x420x600	770x420x600
Weight(kg)	18	19

### FEATURES

- Adjustable seat height
- Adjustable seat and back angle
- Adjustable weight tension
- Fixed arms
- Knee tilt mechanism with 3 locking positions
- 660mm heavy duty black aluminium base
- Black powder coated frame
- Available in black mesh, terracotta bonded leather, tan bonded leather and black bonded leather
- Minor assembly required
- Suitable for indoor use only
- 5 year warranty
- Weight limit is 130kg



VOLT-TA



VOLT-BL



VOLT-TE



VOLT-ME

# OYSTER RANGE

MULTI SHIFT SEATING



OYEX1-H



Box	OYEX1-M	OYEX1-L
Size (mm)	775x640x380	695x640x400
Weight(kg)	25	24

## FEATURES

- Adjustable seat height
- Adjustable back height (ratchet)
- (available in low back only)
- Adjustable seat and back angle
- Adjustable seat depth (seat slider)
- Adjustable arms
- Available in high, medium and low back
- Moulded seat foam
- Mesh back
- 4 lever ergonomic mechanism
- 700mm aluminium base
- Available in black only
- Minor assembly required
- Suitable for indoor use only
- 10 year warranty
- Weight limit is 140kg



OYEX1-M



OYEX1-L



# IMPACT RANGE

## MULTI SHIFT SEATING



IMPACH-H



Box	Impact-L
Size (mm)	790x480x700
Weight(kg)	22

### FEATURES

- Adjustable seat height
- Adjustable seat and back angle
- Adjustable seat depth (seat slider)
- Adjustable weight tension
- Adjustable lumbar support
- Optional headrest
- Adjustable arms
- Moulded seat and back foam
- Saddle seat
- Double steel strengthened for both seat and back
- Synchron mechanism with 3 locking positions
- 720mm aluminium base
- AFRDI tested to level 6
- Multi shift use 200kg
- Available in black only
- Minor assembly required
- Suitable for indoor use only
- 7 year warranty
- Weight limit is 200kg



IMPACT-L



IMPACT-L  
BACK VIEW



# GIBBS RANGE

## EXECUTIVE SEATING



GIBBS



Box	Gibbs
Size (mm)	740x320x600
Weight(kg)	15.5

### FEATURES

- Adjustable seat height
- Adjustable seat and back angle
- Adjustable weight tension
- Adjustable arms
- Lumbar support
- Butterfly mechanism
- 600mm black nylon 5 star base
- Minor assembly required
- Suitable for indoor use only
- 4 year warranty
- Weight limit is 120kg



SIDE VIEW



BACK VIEW

# BOLT RANGE

## EXECUTIVE SEATING



BOLT-H



Box	Bolt-L
Size (mm)	680x300x640
Weight(kg)	18

### FEATURES

- Adjustable seat height
- Adjustable seat and back angle
- Adjustable seat depth (seat slider)
- Adjustable lumbar support
- Adjustable arms
- Auto weight tensioning
- Optional adjustable headrest
- Synchron mechanism with 3 locking positions
- 670mm black nylon 5 star base
- Available in black only
- Suitable for indoor use only
- 4 year warranty
- Weight limit is 120kg



BOLT-L



BOLT-L  
BACK VIEW

# BAXTER RANGE

## EXECUTIVE SEATING



BAXTER-H



Box	Baxter-L
Size (mm)	720x360x650
Weight(kg)	21

### FEATURES

- Adjustable seat height
- Adjustable seat and back angle
- Adjustable seat depth (seat slider)
- Adjustable weight tension
- Adjustable lumbar
- Adjustable arms
- Optional adjustable headrest
- Synchron mechanism with 3 locking positions
- 700mm aluminium base
- Available in black only
- BIFMA tested
- Minor assembly required
- Suitable for indoor use only
- 5 year warranty
- Weight limit is 130kg



BAXTER-L



BAXTER-L  
BACK VIEW

# RENATA RANGE

## EXECUTIVE SEATING



RENATA-H



Box	Renata-L
Size (mm)	740x575x660
Weight(kg)	29

### FEATURES

- Adjustable seat height cable controlled
- Adjustable seat and back angle cable controlled
- Adjustable seat depth (seat slider) cable controlled
- Adjustable weight tension
- Adjustable active lumbar
- Adjustable arms
- Optional adjustable headrest
- Coat rack
- Mesh seat and back only
- Synchron mechanism with 3 locking positions
- 700mm aluminium base
- Available in black only
- BIFMA tested
- Minor assembly required
- Suitable for indoor use only
- 5 year warranty
- Weight limit is 120kg



RENATA-L



RENATA-L  
BACK VIEW



# HILTON RANGE

## EXECUTIVE SEATING



HILTON-H

Box	Hilton-H	Hilton-L
Size (mm)	790x350x650	690x350x630
Weight(kg)	19	18.5
Box	Hilton-VC	
Size (mm)	740x565x560	
Weight(kg)	30	
QTY /box	2 in one box	

### FEATURES

#### HILTON-H/ HILTON-L

- Adjustable seat height
- Adjustable seat and back angle
- Adjustable weight tension
- Adjustable arms
- Available in high and low back
- Synchron mechanism with 3 locking positions
- 700mm large black nylon base
- Available in black PU only
- Minor assembly required
- Suitable for indoor use only
- 5 year warranty
- Weight limit is 120kg

#### HILTON-VC

- Black metal frame
- Available in black PU only
- Minor assembly required
- Suitable for indoor use only
- 5 year warranty
- Weight limit is 120kg



HILTON-L



HILTON-VC

# FLASH RANGE

## EXECUTIVE SEATING



FLEX1H



FLEX1L



FLVC1



Box	Flex1H	Flex1L/Flvc1
Size (mm)	940x440x630	780x440x580
Weight(kg)	17	14

### FEATURES

#### FLEX1-H/ FLEX1-L

- Adjustable seat height
- Adjustable seat and back angle
- Adjustable weight tension
- Fixed arms
- Available in high and low back
- Knee tilt mechanism with 3 locking positions
- 700mm aluminium base
- Aluminium frame
- Available in black leather only
- Minor assembly required
- Suitable for indoor use only
- 5 year warranty
- Weight limit is 120kg

#### FLVC1

- Aluminium cantilever frame
- Available in black leather only
- Minor assembly required
- Suitable for indoor use only
- 5 year warranty
- Weight limit is 120kg

# EVITA RANGE

## EXECUTIVE SEATING



Box	Evita-TA	Evita-L	Evita-VC
Size (mm)	690x330x600	705x480x630	760x650x580
Weight(kg)	17	24	26
QTY /box	1 in one box	1 in one box	2 in one box



EVITA-H



EVITA-L



EVITA-VC



EVITA-TA

### FEATURES

#### EVITA-H/ EVITA-L

- Adjustable seat height
- Adjustable seat and back angle
- Adjustable seat depth (seat slider)
- Adjustable weight tension
- Adjustable lumbar
- Adjustable arms
- Optional adjustable headrest
- Moulded seat foam
- Korean mesh back
- Synchron mechanism with 3 locking positions
- 700mm aluminium base
- Available in black only
- BIFMA tested
- Minor assembly required
- Suitable for indoor use only
- 5 year warranty
- Weight limit is 120kg

#### EVITA-TA

- Adjustable seat height
- Adjustable seat angle
- Adjustable back angle
- Adjustable lumbar
- Adjustable arms
- Synchron mechanism with 3 locking positions
- 680mm black nylon base
- Moulded seat foam
- Korean mesh back
- Available in black only
- Minor assembly required
- Suitable for indoor use only
- 5 year warranty
- Weight limit is 120kg

#### EVITA-VC

- Chrome frame
- Moulded seat foam
- Korean mesh back
- Available in black only
- Minor assembly required
- Suitable for indoor use only
- 4 year warranty
- Weight limit is 120kg

# KUBE RANGE

## EXECUTIVE SEATING



Box	Kube-L
Size (mm)	720x370x620
Weight(kg)	19.2



KUBE-H

### FEATURES

- Adjustable seat height
- Adjustable seat and back angle
- Adjustable seat depth (seat slider)
- Adjustable weight tension
- Adjustable lumbar
- Adjustable arms
- Optional adjustable headrest
- Synchron mechanism with 3 locking positions
- 670mm black nylon 5 star base
- Available in black only
- BIFMA tested
- Minor assembly required
- Suitable for indoor use only
- 5 year warranty
- Weight limit is 130kg



KUBE-L



KUBE-L  
BACK VIEW



# GRAND RANGE

## EXECUTIVE SEATING



Box	Grand-H	Grand-L
Size (mm)	880x370x640	780x360x640
Weight(kg)	25.7	22.6



GRAND-H

### FEATURES

#### GRAND-H/ GRAND-L

- Adjustable seat height
- Adjustable seat and back angle
- Adjustable weight tension
- Available in high and low back
- Fixed aluminium arms
- High density foam
- Knee tilt mechanism with 3 locking positions
- 700mm aluminium base
- Available in black PU only
- Minor assembly required
- Suitable for indoor use only
- 5 year warranty
- Weight limit is 120kg

#### GRAND-VC

- Chrome frame
- High density foam
- Available in black PU only
- Minor assembly required
- Suitable for indoor use only
- 5 year warranty
- Weight limit is 120kg



GRAND-L



GRAND-VC



# CAPTAIN RANGE

## EXECUTIVE SEATING



CAPTAIN-H



Box	Captain-H	Captain-L
Size (mm)	900x630x690	770x630x690
Weight(kg)	26	24

### FEATURES

- Adjustable seat height
- Adjustable seat and back angle
- Adjustable weight tension
- Adjustable seat depth (seat slider)
- Available in high and low back
- Synchron mechanism with 3 locking positions
- 700mm aluminium base
- Extremely comfortable
- Available in black leather only
- Suitable for indoor use only
- 5 year warranty
- Weight limit is 130kg



CAPTAIN-L



CAPTAIN-L  
BACK VIEW

# REGAL RANGE

## EXECUTIVE SEATING



REGAL-H



### FEATURES

- Adjustable seat height
- Adjustable seat and back angle
- Adjustable weight tension
- Adjustable chrome arms
- Saddle seat
- Synchron mechanism with 3 locking positions
- Moulded back foam
- Optional headrest
- 700mm Aluminium base
- Available in local fabrics
- 5 Year warranty
- Weight limit is 130kg



UPHOLSTERED WITH  
ALL LOCAL FABRICS  
AVAILABLE



REGAL-L



REGAL-L  
BACK VIEW

# NEO RANGE

## HOSPITALITY SEATING



NEO

Box	Neo
Size (mm)	920x620x510
Weight(kg)	27
QTY /box	5 in one box

### FEATURES

- Not available with arms
- Stackable
  - Maximum 5 chairs on floor
- Square tube
- Mesh back
- Padded seat
- Black metal frame
- Available in black only
- Minor assembly required
- Suitable for indoor use only
- 3 year warranty
- Weight limit is 120kg



SIDE VIEW



BACK VIEW

# VINN RANGE

## HOSPITALITY SEATING



VINN-B

### FEATURES

- Optional plastic or mesh back
- Optional arms, tablet arm or stool
- Optional black metal trolley, easy to move when stacked
- Available in beam seating
- Stackable
  - Maximum 13 chairs on trolley
  - Maximum 5 chairs on floor
  - Maximum 3 chairs with stools or arms
  - Not stackable with tablet arms or stool with arms
- Linkable except with tablet arms or arms
- Chrome finish
- Black plastic
- Plastic under pan
- Solid steel sled base frame
- Available in black only
- Suitable for indoor use only
- 4 year warranty
- Weight limit is 120kg



UPHOLSTERED PAD  
WITH ALL LOCAL  
FABRICS AVAILABLE



VINN-BA



VINN-BT



VINN-B-ST



VINN-B-StA



VINN-TRL

# VINN RANGE

## HOSPITALITY SEATING



VINN-MB

### FEATURES

- Optional plastic or mesh back
- Optional arms, tablet arm or stool
- Optional black metal trolley, easy to move when stacked
- Available in beam seating
- Stackable
  - Maximum 13 chairs on trolley
  - Maximum 5 chairs on floor
  - Maximum 3 chairs with stools or arms
  - Not stackable with tablet arms or stool with arms
- Linkable except with tablet arms or arms
- Chrome finish
- Black plastic
- Plastic under pan
- Solid steel sled base frame
- Available in black only
- Suitable for indoor use only
- 4 year warranty
- Weight limit is 120kg



UPHOLSTERED PAD  
WITH ALL LOCAL  
FABRICS AVAILABLE



VINN-MBA



VINN-MBT



VINN-MB-ST



VINN-MB-STA



VINN-TRL



# POD 4 LEG RANGE

HOSPITALITY SEATING



## FEATURES

- Optional arms
- Optional tablet arm
- Optional stool
- Optional black metal trolley, easy to move when stacked
- Optional 4 legs or sled base chrome frame
- Available in beam seating
- Stackable
  - Maximum 13 chairs on trolley
  - Maximum 5 chairs on floor
  - Maximum 3 chairs with stool or arms
  - Maximum 3 chairs with tablet arms
- Plastic under pan
- Available in black, red and white only
- Suitable for indoor use only
- 4 year warranty
- Weight limit is 120kg

## COLOUR



UPHOLSTERED PAD  
WITH ALL LOCAL  
FABRICS AVAILABLE



POD-4R



POD-4BA



POD-4WT



POD-STR



POD-TRL

# POD SLED RANGE

HOSPITALITY SEATING



POD-SR

## FEATURES

- Optional arms
- Optional tablet arm
- Optional stool
- Optional black metal trolley, easy to move when stacked
- Optional 4 legs or sled base chrome frame
- Available in beam seating
- Stackable
  - Maximum 13 chairs on trolley
  - Maximum 5 chairs on floor
  - Maximum 3 chairs with stool or arms
  - Maximum 3 chairs with tablet arms
- Plastic under pan
- Available in black, red and white only
- Suitable for indoor use only
- 4 year warranty
- Weight limit is 120kg

## COLOUR



B-Black R-Red W-White



UPHOLSTERED PAD  
WITH ALL LOCAL  
FABRICS AVAILABLE



POD-SBA



POD-SWT



POD-TRL

# MAXI 4 LEG RANGE

HOSPITALITY SEATING



M1-BC

## FEATURES

- Optional arms
- Optional tablet arm
- Optional stool
- Optional black metal trolley, easy to move when stacked
- Optional 4 legs or sled base chrome frame
- Available in beam seating
- Stackable
  - Maximum 13 chairs on trolley
  - Maximum 5 chairs on floor
  - Maximum 3 chairs with stool or arms
  - Maximum 3 chairs with tablet arms
- Plastic under pan
- Available in black, red and white only
- Suitable for indoor use only
- 4 year warranty
- Weight limit is 120kg



MI



MI-C



MI-B



MMI-C



MMI-B



MMI-BC



MM1



SLED BASE OPTION  
AVAILABLE



UPHOLSTERED WITH  
ALL LOCAL FABRICS  
AVAILABLE

# SMOKE RANGE

## BREAKOUT SEATING



SMOKE-NL

### FEATURES

- Adjustable seat height (With 4 star base, black base and black base with castors only)
- Optional chrome 4 legs frame
- Optional chrome sled base
- Optional 700mm aluminium 4 star base
- Optional timber legs with natural finish
- Optional timber legs with black finish
- Optional black base with or without castors
- Fully upholstered
- High density foam
- Plywood shell
- Available in local fabrics
- Optional frame or base colour (please allow 5 more days)
- Suitable for indoor use only
- 5 year warranty
- Weight limit is 130kg



UPHOLSTERED WITH ALL LOCAL FABRICS AVAILABLE



SMOKE-4L



SMOKE-AB



SMOKE-BB



SMOKE-NL



SMOKE-BL



SMOKE-SB

# VERO RANGE

## BREAKOUT SEATING



VERO-CHB



### FEATURES

- Optional black or timber finish
- Plywood inner structure
- High density foam
- Available in local fabrics
- Optional frame or base colour (please allow 5 more days)
- Suitable for indoor use only
- 5 year warranty
- Weight limit is 130kg



UPHOLSTERED WITH ALL LOCAL FABRICS AVAILABLE



VERO-CHT



VERO-STB



VERO-STT





TIME-NL



### FEATURES

- Adjustable seat height  
(With 4 star base, black base and black base with castors only)
- Optional solid rod chrome sled base
- Optional timber legs with natural finish
- Optional timber legs with black finish
- Optional black base with or without castors
- High density foam
- Moulded back foam
- Plywood shell
- Available in local fabrics
- Optional frame or base colour  
(please allow 5 more days)
- Suitable for indoor use only
- 5 year warranty
- Weight limit is 120kg



UPHOLSTERED WITH  
ALL LOCAL FABRICS  
AVAILABLE



TIME



TIME-BL



TIME-BB



TIME-BBC

# LEO RANGE

## BREAKOUT SEATING



LEO-H



### FEATURES

#### LEO-L/LEO-H FEATURES

- Available in high and low back
- High density foam
- Loose back cushion
- Metal frame
- Adjustable feet
- Available in local fabrics
- Suitable for indoor use only
- 3 year warranty
- Weight limit is 120kg

#### TABLE FEATURES

- MDF white top
- Chrome frame
- 3 year warranty



UPHOLSTERED WITH  
ALL LOCAL FABRICS  
AVAILABLE



LEO-L



LEO-T



# SHELL RANGE

SOFT SEATING

WEIGHT LIMIT  
**130**  
Kilogram



SHELL-1SH

WARRANTY  
**5**  
Year

WEIGHT LIMIT  
**130**  
Kilogram

WEIGHT LIMIT  
**260**  
Kilogram



## FEATURES

- Optional black or timber finish
- Australian made
- Available in 1 or 2 seater
- High density foam
- Loose cushions upholstered both sides
- Timber frame
- Aluminum legs
- Available in local fabrics
- Optional frame or base colour (please allow 5 more days)
- Suitable for indoor use
- 5 year warranty
- Weight limit for 1 seater is 130kg
- Weight limit for 2 seater is 260kg



UPHOLSTERED WITH  
ALL LOCAL FABRICS  
AVAILABLE

WEIGHT LIMIT  
**130**  
Kilogram



SHELL-1S

WEIGHT LIMIT  
**260**  
Kilogram



SHELL-2S

WEIGHT LIMIT  
**260**  
Kilogram



SHELL-2S



# JADEN RANGE

SOFT SEATING



JADEN-1

WEIGHT LIMIT  
**130**  
Kilogram



## FEATURES

- Optional 1 or 2 seater
- High density foam
- Stainless steel frame
- Solid timber inner frame
- Available in black PU only
- Minor assembly required
- Suitable for indoor use only
- 5 year structural warranty
- Weight limit for 1 seater is 130kg
- Weight limit for 2 seater is 260kg



JADEN-2

WEIGHT LIMIT  
**260**  
Kilogram



JADEN-1  
Back view

# RIVET RANGE

SOFT SEATING



RIVET-1

WEIGHT LIMIT  
**130**  
Kilogram



## FEATURES

- Adjustable seat height
- Adjustable back height
- Adjustable weight tension
- Fixed arms
- 3 lever ergonomic mechanism
- 600mm heavy duty 5 star base
- Available in black only
- Minor assembly required
- Suitable for indoor use only
- 4 year warranty
- Weight limit is 120kg



RIVET-2

WEIGHT LIMIT  
**260**  
Kilogram



RIVET-1  
Back view



# PLAZA RANGE

SOFT SEATING

**WARRANTY**  
**5**  
 Year

**WEIGHT LIMIT**  
**130**  
 Kilogram

**WEIGHT LIMIT**  
**260**  
 Kilogram

**WEIGHT LIMIT**  
**390**  
 Kilogram

**IMPORTED**

Box	PL-1S	PL-2S
Size (mm)	840x840x580	1420x840x600
Weight(kg)	24	36
Box	PL-3S	
Size (mm)	1980x820x580	
Weight(kg)	45	

**WEIGHT LIMIT**  
**260**  
 Kilogram



PL-2S

**WEIGHT LIMIT**  
**390**  
 Kilogram



PL-3S

**WEIGHT LIMIT**  
**130**  
 Kilogram



PL-1S

## FEATURES

- Optional 1, 2 or 3 seater
- Pocket spring seat
- Loose cushions upholstered both sides
- Zig zag steel spring
- Webbed base
- Solid hardwood frame
- Stainless steel feet
- Available in black PU only
- Minor assembly required
- Suitable for indoor use only
- 5 year warranty
- Weight limit for 1 seater is 130kg
- Weight limit for 2 seater is 260kg
- Weight limit for 3 seater is 390kg



LOCALLY UPHOLSTERED -  
 MONTAGE RANGE OPTION  
 AVAILABLE

# FABRIC OPTION

## LANA WOOL RANGE

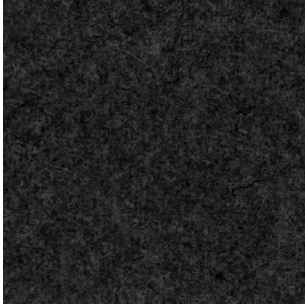
---



STEEL



GREY



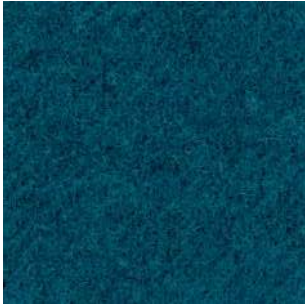
CARBON



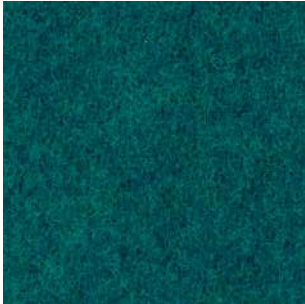
SAND



SKY



WAVE



TEAL



SAPPHIRE



WINE



FIRE



FOREST

## SPADE RANGE

---



BLACK VINYL



RED VINYL



WHITE VINYL



BLACK LEATHER



LOOP RANGE

---



AQUA



SEA



BLACK



MIST



DUST



HOT



RED



TREE



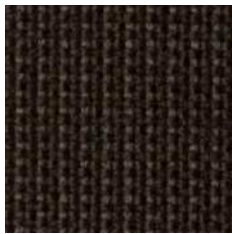
LIME

JAZZ RANGE

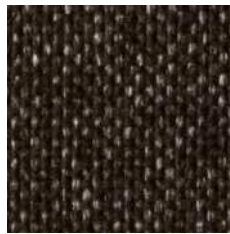
---



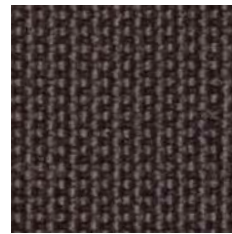
BLACK



MIDNIGHT



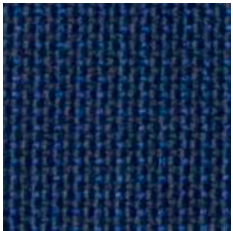
CHARCOAL



SILVER



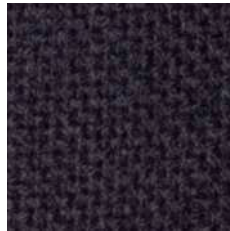
METRO INK



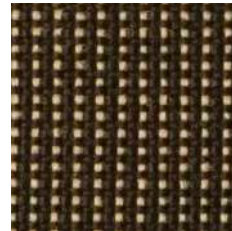
INDIGO



TURQUOISE



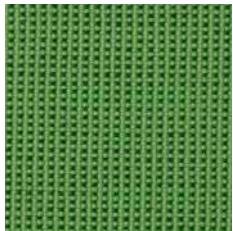
NAVY



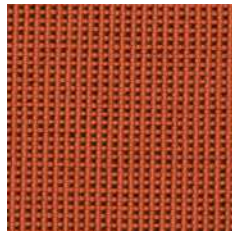
GOLD



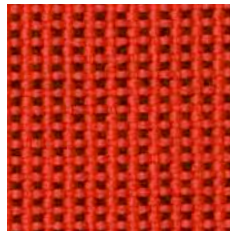
METRO BLACK



APPLE



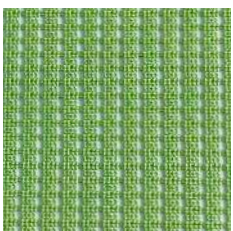
ORANGE



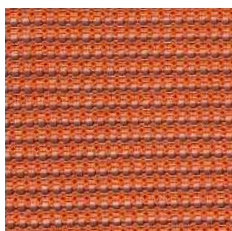
CRIMSON

JAZZ MESH RANGE

---



MINT



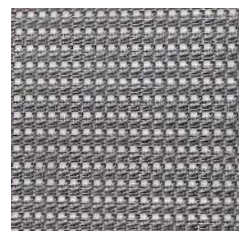
CITRUS



OCEAN



HOT



SLATE



## OUR INNOVATION, YOUR REALITY

We are a proud Gold Coast family company with over 15 years' industry expertise at your service. We focus on innovation, quality products, and excellence in communication, service and delivery throughout your entire project.

Our stylish space solutions reflect contemporary design trends while ensuring durability and functionality. We source the best products for your requirements considering the elements of durability, flexibility, health and safety, price point and aesthetics. We deliver an extensive range of products from carefully selected brands.



### **Beau Creswick**

Director

**M:** 0431 581 169

**E:** beau@maxwellbeau.com.au

### **Who is MaxwellBeau?**

Managing Director - **Beau Creswick**

Beau has been involved in the commercial furniture and education sector since 2004.

Beau is the Business and Sales Director of MaxwellBeau and is responsible for the day to day running of the company.

He is heavily involved in design and product procurement with a keen eye for detail

With a hands on approach to all aspects of the company, you will more than likely see Beau from initial contact all the way through to installation and handover of your job.

### **ABN**

14 618 661 288

### **NSW OFFICE**

4/268 River Street,  
Ballina NSW 2487

### **QLD OFFICE**

8/15 John Duncan Court,  
Varsity Lakes QLD 4227

### **EMAIL**

info@maxwellbeau.com.au

### **WEBSITE**

www.maxwellbeau.com.au  
<http://officechairs.direct/>

### **PHONE**

1300 654 833